



# ENGINEERING TECHNICIAN

\$30.16 - \$42.21 PER HOUR DOQ

Recruitment Opens February 6, 2025

Recruitment Closes February 26, 2025 at 5:00 p.m.





# ENGINEERING TECHNICIAN

## POSITION SUMMARY

This position reports to the Project Engineer and, depending upon level, is responsible for performing field surveys for waterline designs, creating construction drawings for capital improvement projects, and may perform construction management services in pursuit of the District's objectives.

## ESSENTIAL DUTIES AND RESPONSIBILITIES

The following essential job functions are illustrative only and are not intended to be all-inclusive. Duties may be modified, added, or deleted at the discretion of management.

- Depending upon level, responsible for performing field surveys for waterline designs, creating construction drawings for capital improvement projects, and may perform construction management services.
- Accurately conducts field surveys and utility record acquisition to obtain data for projects and designs.
- Prepares drawings and details from engineering sketches, surveys, field notes, and other data using a variety of specialized computer software for the design and construction of projects.
- Combines all design methods and disciplines to form complete, correct, and concise construction drawings for capital improvement projects.
- Provides input on timeframes to survey and draft projects.
- Completes maps of finished construction projects, certifies compliance with project design specifications and standards, and coordinates distribution of record drawings with GIS staff.
- Collaborates with Engineering department employees in coordinating construction schedules, inspecting waterline projects for compliance with design, safety, material specifications, and site clean-up standards.
- Collects, maintains, and distributes distribution system features to GIS staff.

# THE ENGINEERING DEPARTMENT

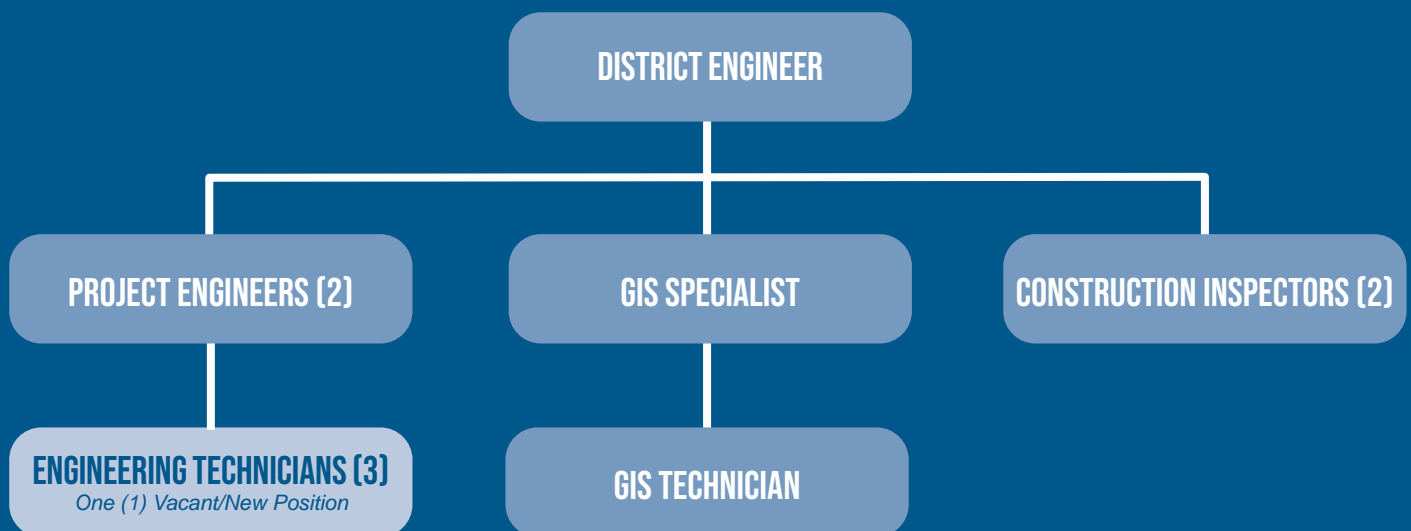
The District's Engineering Department is expanding by adding an Engineering Technician to our team.

The Engineering Department works with other departments as needed to develop, plan, budget, design, sometimes construct, but often administer contracts and manage construction projects. The District coordinates new development projects, often residential, but sometimes commercial, with consulting engineers to ensure conformity with approved design and District standard specifications.

The District has some really exciting projects on the horizon including: pipeline and pump station; distribution storage tank rehabilitation; raw water reservoir expansion and rehabilitation, and clearwell expansion to name a few. Annually recurring projects typically include water line upgrades based on domestic demand or fire flows; coordination with Mesa County, Fruita, Grand Junction, Palisade, and CDOT projects; or projects identified through operations and maintenance. The Engineering capital improvement budget is generally \$4MM-\$6MM but will triple/quadruple for the 3 years of Monument Reservoir Enlargement project which is on the near horizon.



## ENGINEERING DEPARTMENT ORGANIZATION CHART



# POSITION REQUIREMENTS

Based on level, the Engineering Technician position matrix of education, experience, and/or licensure is as follows:

LEVEL	EDUCATION	EXPERIENCE	CERTIFICATION	LICENSES
<b>ENGINEERING TECHNICIAN II</b>				
\$32.85 - \$42.21 per hour	Associate degree or higher in Civil Engineering, Engineering Technology, Construction Management, or a closely related field from an accredited institution.	<p>Three (3) years or more of drafting and/or surveying experience.</p> <p>A minimum of three (3) years of experience with computer-aided drafting (CAD) software Civil 3D.</p> <p>A minimum of two (2) years of experience in reading and interpreting engineering project plans.</p> <p>Proficient in the use of surveying software such as Trimble Business Center, and surveying equipment which includes theodolite, survey level, total station, and survey grade GPS equipment.</p> <p>Familiarity with quality assurance and quality control testing procedures.</p>	<p>FAA Remote Pilot Certificate (also known as FAA Part 107 UAS license), or obtains such certificate within one (1) year from date of hire into position.</p>	Valid Colorado Driver's License.
<b>ENGINEERING TECHNICIAN I</b>				
\$30.16 - \$38.68 per hour	<p>Technical certificate in Civil Drafting from an accredited institution.</p> <p>High School Diploma or General Education Degree.</p>	<p>Two (2) years or less of drafting and/or surveying experience.</p> <p>A minimum of two (2) years of experience with computer-aided drafting (CAD) Civil 3D.</p> <p>Proficient in the use of PDF editing software such as BlueBeam.</p> <p>Familiarity with surveying software such as Trimble Business Center, and surveying equipment which includes theodolite, survey level, total station, and survey grade GPS equipment.</p> <p>Familiarity with navigating and interpreting GIS programs and field mapping applications such as ESRI ArcGIS Field Maps, Google Earth, and Google Maps.</p>		Valid Colorado Driver's License.

## PREFERRED SKILLS

- Valid State of Colorado Class I-IV Water Distribution System Operator certificate.
- Valid FAA Remote Pilot Certificate (also known as FAA Part 107 UAS license).
- Familiarity with raw water collection and conveyance, domestic water distribution and transmission, and/or treatment systems.
- Familiarity with reading and interpreting engineering project plans.

*Any equivalent combination of certifications, education, or experience that provides the required skills, knowledge, and abilities of the position.*

## COMPENSATION

This is a non-exempt position with a competitive benefits package and the pay range for this position is \$30.16 - \$42.21 per hour, **depending upon qualifications.**



## BENEFITS PACKAGE



### Medical Insurance

3 Insurance plan choices, 2 of which 100% of the premium is paid by the District



### Dental Insurance



### Vision Insurance



### Retirement

401(a) and 457(b) plans with employer match up to 10%



### Supplemental Insurance



### Life Insurance

Company paid and voluntary life insurances



### Flexible Benefit Plan

\$600 annual employer contribution to Health Savings Account



### Education Assistance



### Paid Leaves

Statutory and other generous paid leaves



### Employee Assistance Program

And more, including bonuses, on-the-job training, and department specific allowances and reimbursements.



## HOW TO APPLY

Visit the District's careers page at [utewater.org/careers](http://utewater.org/careers) to preview the Engineering Technician position's job descriptions for Level I and Level II for details regarding the essential duties, responsibilities, and qualifications requirements.

If qualified, please submit the following documents to be considered for the Engineering Technician position:

**Employment Application**

**Supplemental Questionnaire**

**Cover Letter**

Addressing the following:

- Expressing interest in the Engineering Technician position.
- Why are you interested in this position?

The deadline to apply for this recruitment is **Wednesday, February 26th at 5:00 p.m.**

Please submit all materials either:

**In Person**

2190 H ¼ Road, Grand Junction, CO 81505

**Mail**

PO Box 460, Grand Junction, CO 81502

**Email**

[hr@utewater.org](mailto:hr@utewater.org)

The District is an Equal Opportunity Employer. The candidate selected for employment must possess a valid Colorado Driver License and pass a drug screen, physical, background and reference check.

If you have questions regarding pay, benefits, the position, or the recruitment process, please contact human resources at (970) 242-7491 or [hr@utewater.org](mailto:hr@utewater.org).

# WORKING AT UTE WATER

Why do we want the best water around? Because it's our water too. For 68 years, we've treated the snowmelt found on the Grand Mesa and a few other sources to make it the freshest we can. That's the absolute truth.

Founded by a group of farmers who fought to bring domestic water services to the rural areas of the Grand Valley outlying the Town of Palisade and City of Grand Junction, Ute Water Conservancy District (District) was founded to serve the community with clean, drinkable water.

Today, the District is recognized as the largest domestic water provider between Denver, Colorado, and Salt Lake City, Utah. 90,000 Grand Valley residents rely on our employees to provide them with high quality water and reliable service.

*The process of capturing freshly fallen snowmelt from the Grand Mesa is one that makes the District unique and is admired by other water providers across the nation.*

The Grand Mesa, also recognized as the world's largest flattop mesa, is the primary watershed for the District, and the gravity-fed system that delivers the pristine snowmelt to the customer's tap is unique to the District.

Knowing that some of the best water professionals play an integral role of delivering high-quality water to your tap makes our process one of the best around. Each drop of water that comes out of the tap has originated from the Grand Mesa and is brought to our customers by dedicated employees who help capture, move, treat, and distribute the water to our customers' homes.



# THE GRAND VALLEY

*Home of Ute Water Conservancy District*

**N**amed for its enviable location at the confluence of the Colorado and Gunnison rivers, Grand Junction is a special kind of crossroads – a joining of ancient and modern, rustic and refined, and nature and culture. Grand Junction provides experiences you will not find anywhere else in the world. With a population of 66,900, it is the largest city between Denver, Colorado and Salt Lake City, Utah. Grand Junction is home to the Colorado National Monument, the Grand Mesa, and a large section of the Bookcliff Mountain Range. Mild weather and sunny skies create endless opportunities to enjoy the outdoors with whitewater rafting, mountain biking, hiking, horseback riding, fishing, hunting, golfing, skiing, and snowboarding. Grand Junction is home to Colorado Mesa University and its 11,000

students, the Grand Junction Jackalopes, and the Junior College World Series.

Grand Junction is a laid back, friendly city with an authentic downtown mountain vibe where locals and visitors come together to enjoy local art, boutiques, restaurants, seasonal farmer's markets, and festivals. If you travel about 13 miles to the east of Grand Junction, you will find yourself in Palisade, Colorado's wine country, home to over 20 local wineries and the world-famous Palisade Peach.

With an abundance of opportunity for continuing education, recreation, shopping, wining, and dining, Grand Junction offers a culture that prioritizes family and community, making it a great place to live, work, and play.





**WATER**  
Conservancy District