



PLANT MECHANIC

\$33.83 - \$40.92 PER HOUR

Recruitment Opens March 7, 2025

Recruitment Closes March 28, 2025 at 5:00 p.m.





PLANT MECHANIC

POSITION SUMMARY

The District is recruiting for a full-time Plant Mechanic to join the Water Treatment Facility Maintenance Department under the supervision of the Water Treatment Assistant Superintendent. Responsibilities include installation, maintenance, and repair of machinery, treatment equipment, physical structures, pipe, electrical, hydraulics, pneumatics, and pumping systems at the Water Treatment Facility, source water infrastructure, and within the distribution system to aid in the production of high-quality finished water in pursuit of the District's objectives by performing the following duties.

ESSENTIAL DUTIES AND RESPONSIBILITIES

The following essential job functions are illustrative only and are not intended to be all-inclusive. Duties may be modified, added, or deleted at the discretion of management.

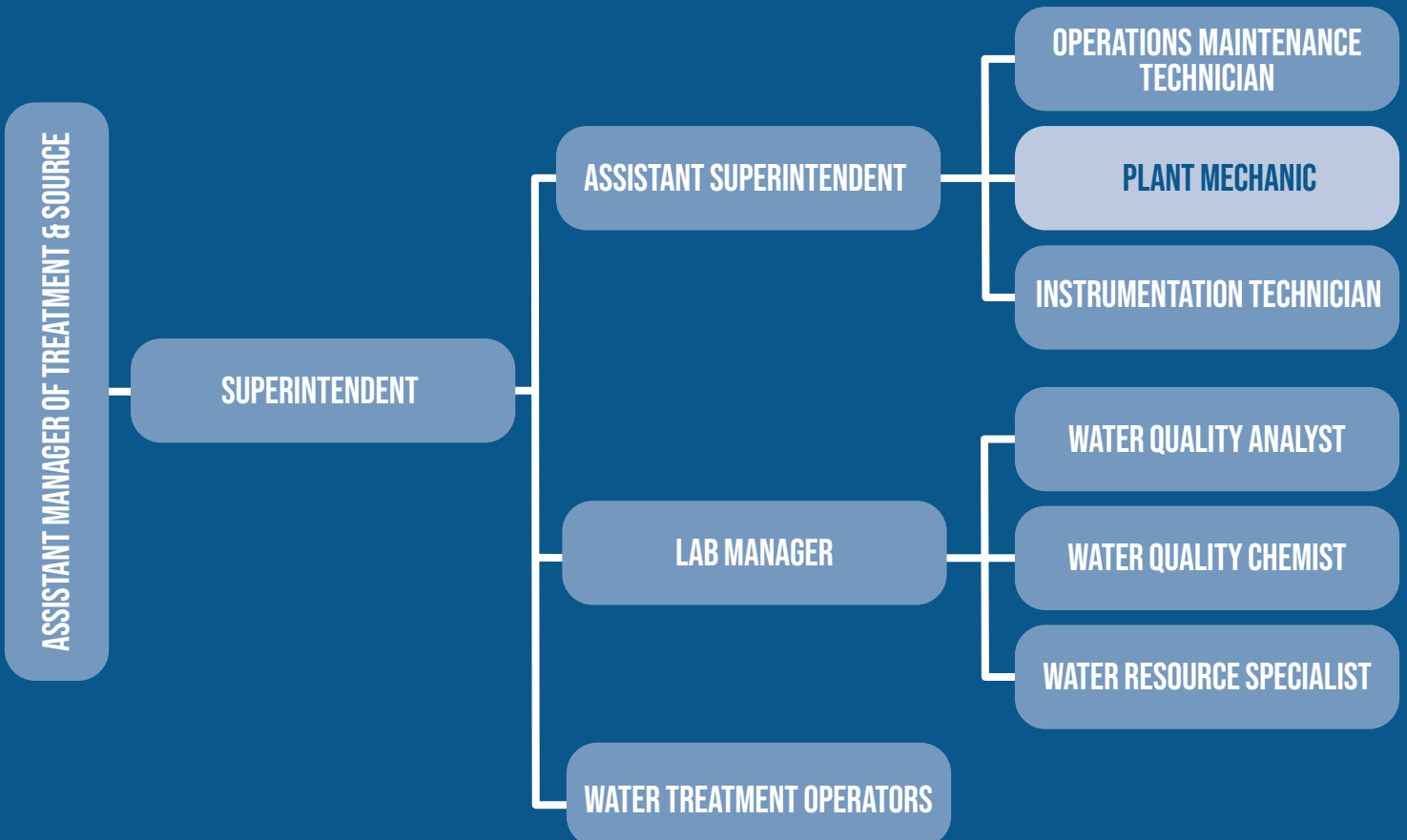
- Visually inspects, cleans, tests, troubleshoots, assembles, installs, and repairs all manner of treatment related equipment including, but not limited to, motors, pumps, mixers, bearings, valves, gauges, filters, plumbing, electrical control systems, analyzers, instrumentation, pneumatics, and hydraulics at the Water Treatment Facility and other locations throughout the District.
- Troubleshoots and diagnoses problems with equipment and infrastructure.
- Dismantles and repairs defective machines and equipment and installs new or repaired parts.
- Calibrates and sets equipment to manufacturer specifications.
- Orders supplies and equipment for maintenance and repair of the treatment facility equipment and infrastructure.
- Tracks and records inventory in spreadsheets.
- Performs housekeeping duties throughout source water and treatment facilities.
- Determines appropriate preventative maintenance schedules for equipment and infrastructure.
- Maintains maintenance records in the computerized maintenance management software and spreadsheets, and operational manuals electronically as PDFs.

THE IMPORTANCE OF THE PLANT MECHANIC

The Plant Mechanic is a versatile position that plays a key role in ensuring the Water Treatment Facility operates smoothly. This position is responsible for the preventative and emergent maintenance of critical treatment equipment and facilities. This position presents the unique opportunity to work on source water and distribution assets that have a direct impact on public health across the Grand Valley.

On any given day, the Plant Mechanic may perform routine maintenance on chemical feed pumps and water quality analyzers or assist in the general maintenance of facilities and grounds. This could include using a front-end loader to move recycled solids, utilizing a brush-hog to clear the grounds, or making trips to the landfill. Additional responsibilities include routine collection of equipment run times, gathering of source water utilization data, participation in annual facility-wide projects, and intermittent coverage of water treatment operations.

We are searching for a motivated individual who is willing to learn and work as part of our highly skilled team in a dynamic environment.



PAY AND BENEFITS

This is a non-exempt position with a competitive benefits package. The pay range for this position is \$33.83 to \$40.92 per hour.

REQUIRED

- High school diploma or general education degree.
- A minimum of one (1) year of treatment facility experience.
- A minimum of one (1) year of maintenance experience. Experience must include industrial electrical, carpentry, masonry, plumbing, and/or mechanical work.
- A minimum of one (1) year of troubleshooting, calibrating, and repairing treatment facility equipment.
- A valid State of Colorado Class “D” Water Treatment Operator certification, or obtains such certification within one (1) year from the date of hire into the position.
- A valid Colorado Driver’s License, in good standing, with insurability under District insurance standards.

PREFERRED

- Valid Colorado Certified Water Professional Water Treatment Operator D-A certification.
- Valid Colorado Class A Commercial Driver’s License, in good standing, with insurability under the District’s insurance standards.
- Familiarity with process control, electrical equipment, programmable controllers, and computerized maintenance management systems.
- Basic understanding of instrumentation, PLCs, RTUs, 4-20 mA signals, etc.

Any equivalent combination of certifications, education, or experience that provides the required skills, knowledge, and abilities of the position.



BENEFITS PACKAGE



Medical Insurance

3 Insurance plan choices, 2 of which 100% of the premium is paid by the District



Dental Insurance



Vision Insurance



Retirement

401(a) and 457(b) plans with employer match up to 10%



Supplemental Insurance



Life Insurance

Company paid and voluntary life insurances



Flexible Benefit Plan

\$600 annual employer contribution to Health Savings Account



Education Assistance



Paid Leaves

Statutory and other generous paid leaves



Employee Assistance Program

And more, including bonuses, on-the-job training, and department specific allowances and reimbursements.



HOW TO APPLY

Visit the District's careers page at utewater.org/careers to preview the Plant Mechanic position's job description for details regarding the essential duties, responsibilities, and qualifications requirements.

If qualified, please submit the following documents to be considered for the Plant Mechanic position:

Employment Application

Supplemental Questionnaire

The deadline to apply for this recruitment is **Friday, March 28th at 5:00 p.m.**

Please submit all materials either:

In Person

2190 H ¼ Road, Grand Junction, CO 81505

Mail

PO Box 460, Grand Junction, CO 81502

Email

hr@utewater.org

The District is an Equal Opportunity Employer. The candidate selected for employment must possess a valid Colorado Driver License and pass a drug screen, physical, background and reference check.

If you have questions regarding pay, benefits, the position, or the recruitment process, please contact human resources at (970) 242-7491 or hr@utewater.org.

WORKING AT UTE WATER

Why do we want the best water around? Because it's our water too. For 68 years, we've treated the snowmelt found on the Grand Mesa and a few other sources to make it the freshest we can. That's the absolute truth.

Founded by a group of farmers who fought to bring domestic water services to the rural areas of the Grand Valley outlying the Town of Palisade and City of Grand Junction, Ute Water Conservancy District (District) was founded to serve the community with clean, drinkable water.

Today, the District is recognized as the largest domestic water provider between Denver, Colorado, and Salt Lake City, Utah. 90,000 Grand Valley residents rely on our employees to provide them with high quality water and reliable service.

The process of capturing freshly fallen snowmelt from the Grand Mesa is one that makes the District unique and is admired by other water providers across the nation.

The Grand Mesa, also recognized as the world's largest flattop mesa, is the primary watershed for the District, and the gravity-fed system that delivers the pristine snowmelt to the customer's tap is unique to the District.

Knowing that some of the best water professionals play an integral role of delivering high-quality water to your tap makes our process one of the best around. Each drop of water that comes out of the tap has originated from the Grand Mesa and is brought to our customers by dedicated employees who help capture, move, treat, and distribute the water to our customers' homes.



THE GRAND VALLEY

Home of Ute Water Conservancy District

Named for its enviable location at the confluence of the Colorado and Gunnison rivers, Grand Junction is a special kind of crossroads – a joining of ancient and modern, rustic and refined, and nature and culture. Grand Junction provides experiences you will not find anywhere else in the world. With a population of 66,900, it is the largest city between Denver, Colorado and Salt Lake City, Utah. Grand Junction is home to the Colorado National Monument, the Grand Mesa, and a large section of the Bookcliff Mountain Range. Mild weather and sunny skies create endless opportunities to enjoy the outdoors with whitewater rafting, mountain biking, hiking, horseback riding, fishing, hunting, golfing, skiing, and snowboarding. Grand Junction is home to Colorado Mesa University and its 11,000

students, the Grand Junction Jackalopes, and the Junior College World Series.

Grand Junction is a laid back, friendly city with an authentic downtown mountain vibe where locals and visitors come together to enjoy local art, boutiques, restaurants, seasonal farmer's markets, and festivals. If you travel about 13 miles to the east of Grand Junction, you will find yourself in Palisade, Colorado's wine country, home to over 20 local wineries and the world-famous Palisade Peach.

With an abundance of opportunity for continuing education, recreation, shopping, wining, and dining, Grand Junction offers a culture that prioritizes family and community, making it a great place to live, work, and play.



WATER
Conservancy District